



HALE SCHOOL

WA Exams Practice Paper A, 2015

Question/Answer Booklet

**MATHEMATICS
METHODS
UNITS 1 AND 2
Section Two:
Calculator-assumed**

If required by your examination administrator, please place your student identification label in this box

Student Number: In figures

--	--	--	--	--	--	--	--

In words

Your name

Time allowed for this section

Reading time before commencing work: ten minutes
Working time for section: one hundred minutes

Materials required/recommended for this section

To be provided by the supervisor

This Question/Answer Booklet
Formula Sheet (retained from Section One)

To be provided by the candidate

Standard items: pens (blue/black preferred), pencils (including coloured), sharpener, correction fluid/tape, eraser, ruler, highlighters

Special items: drawing instruments, templates, notes on two unfolded sheets of A4 paper, and up to three calculators approved for use in the WACE examinations

Important note to candidates

No other items may be taken into the examination room. It is **your** responsibility to ensure that you do not have any unauthorised notes or other items of a non-personal nature in the examination room. If you have any unauthorised material with you, hand it to the supervisor **before** reading any further.

Structure of this paper

Section	Number of questions available	Number of questions to be answered	Working time (minutes)	Marks available	Percentage of exam
Section One: Calculator-free	8	8	50	52	35
Section Two: Calculator-assumed	13	13	100	98	65
Total				150	100

Instructions to candidates

1. The rules for the conduct of examinations are detailed in the school handbook. Sitting this examination implies that you agree to abide by these rules.
2. Write your answers in this Question/Answer Booklet.
3. You must be careful to confine your response to the specific question asked and to follow any instructions that are specified to a particular question.
4. Spare pages are included at the end of this booklet. They can be used for planning your responses and/or as additional space if required to continue an answer.
 - Planning: If you use the spare pages for planning, indicate this clearly at the top of the page.
 - Continuing an answer: If you need to use the space to continue an answer, indicate in the original answer space where the answer is continued, i.e. give the page number. Fill in the number of the question that you are continuing to answer at the top of the page.
5. **Show all your working clearly.** Your working should be in sufficient detail to allow your answers to be checked readily and for marks to be awarded for reasoning. Incorrect answers given without supporting reasoning cannot be allocated any marks. For any question or part question worth more than two marks, valid working or justification is required to receive full marks. If you repeat any question, ensure that you cancel the answer you do not wish to have marked.
6. It is recommended that you **do not use pencil**, except in diagrams.
7. The Formula Sheet is **not** to be handed in with your Question/Answer Booklet.

Section Two: Calculator-assumed

(98 Marks)

This section has **thirteen (13)** questions. Answer **all** questions. Write your answers in the spaces provided.

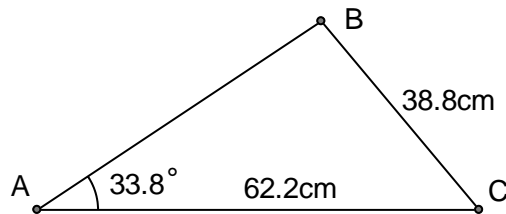
Working time for this section is 50 minutes.

Question 9

(6 marks)

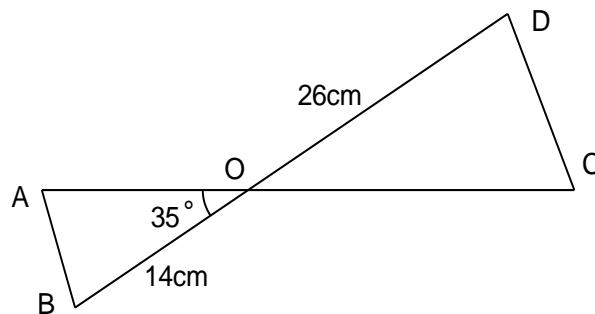
- (a) Calculate the smallest possible length of AB in the triangle shown below.
 (The triangle is not drawn to scale).

(3 marks)



- (b) In the diagram below (not to scale), the line AC intersects the line BD at O. The angle AOB = 35°, and the lengths OB = 14cm, OD = 26cm and AC = 30cm. If the area of triangle ODC is twice that of triangle OAB, determine the length OA.

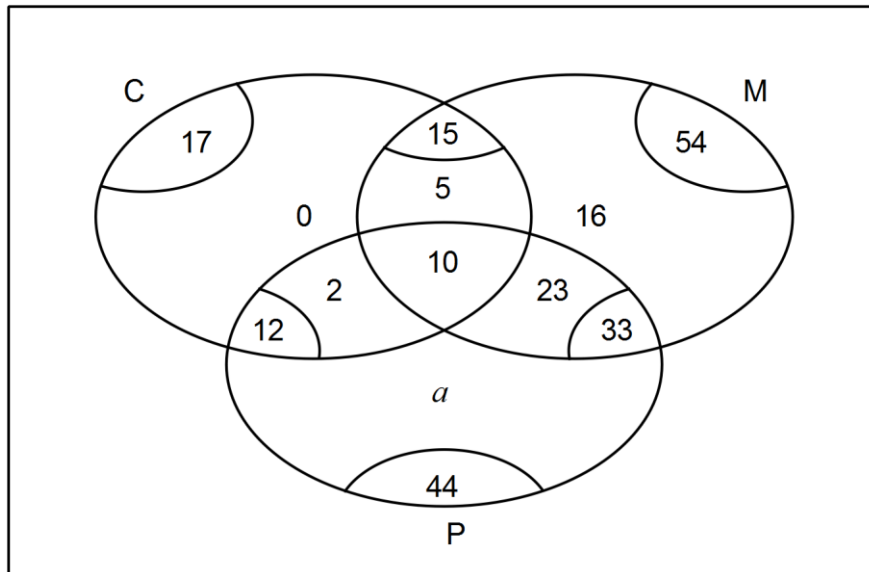
(3 marks)



Question 10

(5 marks)

The following Venn diagram shows the numbers of students electing to study at least one of Chemistry (C), Math (M) or Physics (P) in upper school.



- (a) Determine the value of a . (1 mark)
- (b) Determine $n(C \cup M \cup P)$. (1 mark)
- (c) If one student is selected at random from the group, determine the probability
- they elected to study math but not physics. (1 mark)
 - they elected to study math and physics, given that they did not study chemistry. (1 mark)
 - they elected to study two subjects, given that they did not elect to study all three subjects. (1 mark)

Question 11**(9 marks)**

After the failure of a computer containing the details of 412 clients, Chris was given the job of re-entering all the client information into a new computer. On the first day he managed to re-enter the details of 15 clients. On each subsequent day, he was given more and more time for this job and managed to add two more clients each day than on the previous day.

- (a) How many clients did Chris re-enter on the fifth day? (1 mark)
- (b) How many clients had Chris re-entered altogether after 8 days? (1 mark)
- (c) During which day did Chris finish the job and how many clients did Chris add on this day? (2 marks)
- (d) Because of this new job, Chris began to spend less and less time on his usual job of answering client emails. His time spent answering emails followed an arithmetic progression such that on the 6th day of his new job he spent 2 hours 20 minutes answering emails and on the 10th day he spent just 1 hour 36 minutes.
- (i) How long did Chris spend answering emails on the first day of his new job? (3 marks)
- (ii) After how many days in his new job will Chris have spent a total of at least 30 hours answering emails? (2 marks)

Question 12**(6 marks)**

Software has been developed to classify an email message as either good or spam. The software is not perfect: only 88% of spam is classified as such, and 4% of emails that are good are classified as spam.

A large number of emails, 15% of which were spam, were checked by the software.

- (a) What is the probability that the software will classify a randomly chosen email as spam?
(3 marks)

- (b) Given that the software classifies an email as good, what is the probability that it is actually spam.
(3 marks)

Question 13**(9 marks)**

For two events, A and B , $P(A \cap \bar{B}) = 0.3$, $P(\bar{A} \cap \bar{B}) = 0.1$ and $P(B \cap \bar{A}) = x$.

(a) Determine an expression for $P(A \cap B)$ in terms of x . (2 marks)

(b) State the maximum possible value of $P(A)$. (1 mark)

(c) Determine the value of x under each of the following conditions.

(i) A and B are mutually exclusive. (1 mark)

(ii) $P(A|B) = \frac{1}{5}$. (2 marks)

(iii) A is independent of B . (3 marks)

Question 14**(9 marks)**

Sequence A is geometric and has n^{th} term ($n \geq 1$) given by $T_n = 5(0.8)^n$.

- (a) What is the first term of Sequence A? (1 mark)
- (b) How many terms of Sequence A are greater than 1? (1 mark)
- (c) A student added together the first m terms of Sequence A and obtained a total between 21.9 and 22. Explain why the student must have made a mistake, even though the number m is not known. (2 marks)

Sequence B is also geometric with a common ratio of 1.2. The sum of its first two terms is 0.22.

- (d) Determine the first term of Sequence B. (2 marks)
- (e) How many terms of Sequence B are less than 1? (1 mark)
- (f) What is the fewest number of terms of Sequence B that must be summed to obtain a total of at least 100? Justify your answer. (2 marks)

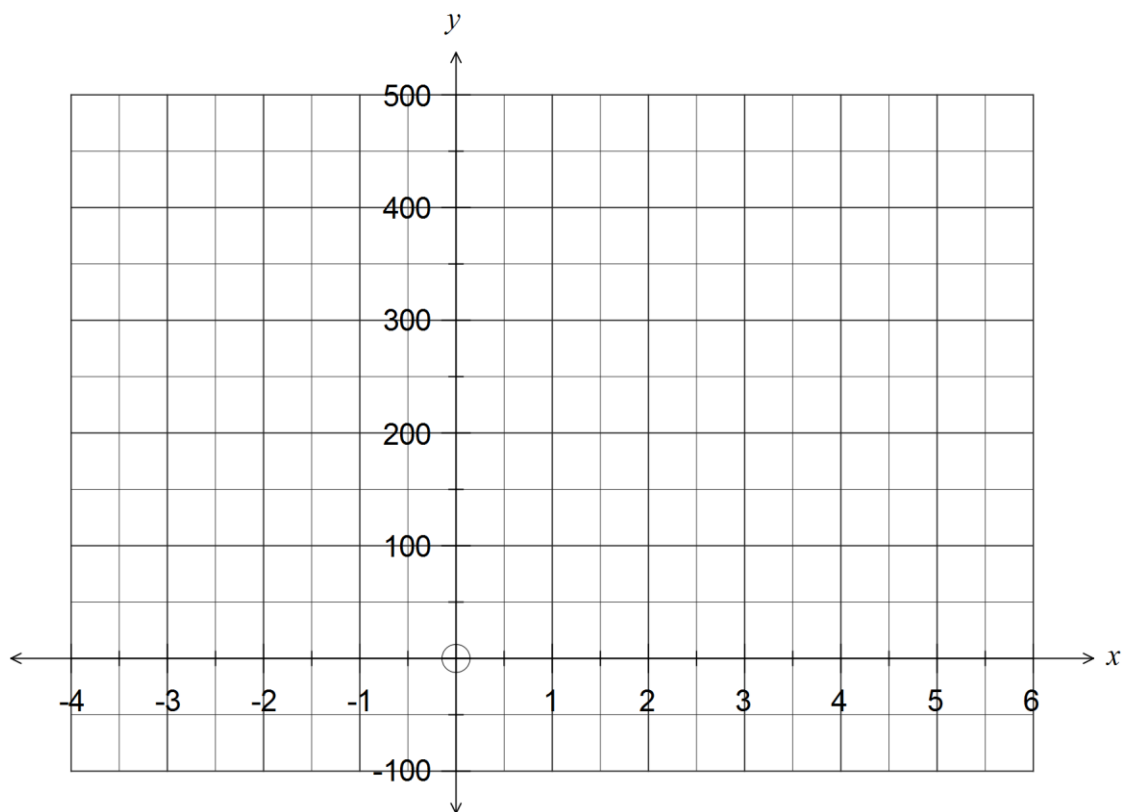
Question 15

(7 marks)

A function is given by $f(x) = 200 + 32x^2 - x^4$ for $-3 \leq x \leq 5$.

- (a) Use calculus techniques to determine the coordinates of both stationary points of the function for the given domain. (4 marks)

- (b) Sketch the graph of $y = f(x)$ for $-3 \leq x \leq 5$ on the axes below. (3 marks)

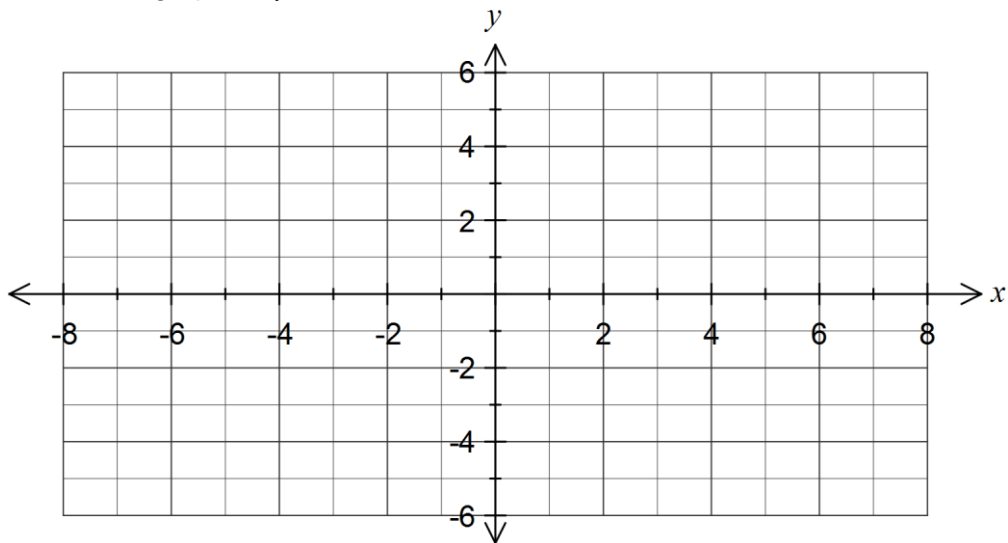


Question 16

(8 marks)

(a) Sketch the graph of $y^2 = 4 - 2x$.

(3 marks)



(b) State, with reasons, whether these relationships are also functions:

(i) $y^2 = 4 - 2x, x \geq 0$.

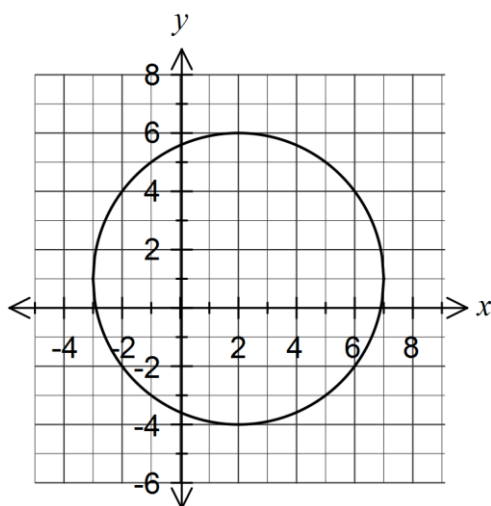
(1 mark)

(ii) $y^2 = 4 - 2x, y \geq 0$.

(1 mark)

(c) The equation of the following graph is $x^2 + y^2 + ax + by = c$. Determine the values of a , b and c .

(3 marks)



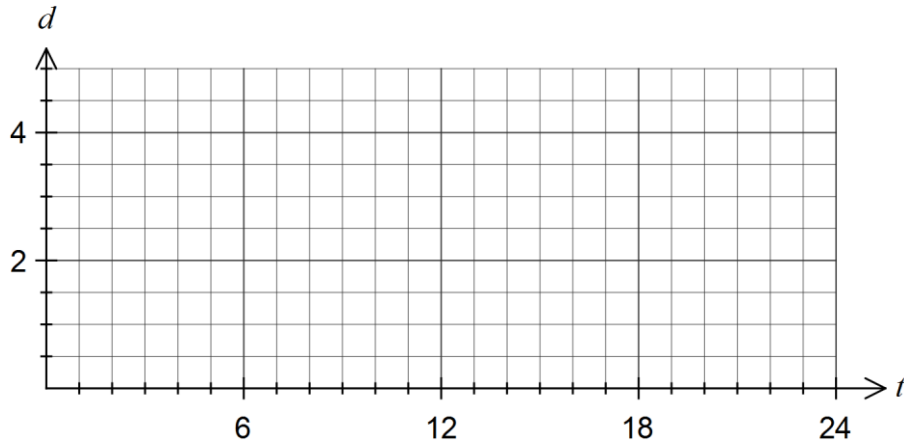
Question 17

(9 marks)

The depth of water in a harbour, d measured in metres, t hours after midnight, can be modelled by the function $d(t) = a \cos(bt) + c$.

The minimum depth of 1.5 metres first occurred at midnight, followed by a maximum of 4.5 metres six hours later.

- (a) Sketch how the depth varied over the first 24 hours on the axes below. (3 marks)



- (b) Explain, with reasoning, why $a = -1.5$, $b = \frac{\pi}{6}$ and $c = 3$. (3 marks)

- (c) For what percentage of a day is the depth of water at least 2.5 metres? (3 marks)

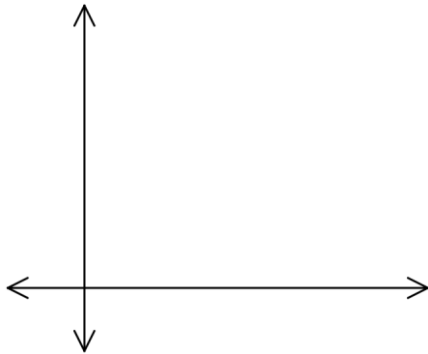
Question 19

(6 marks)

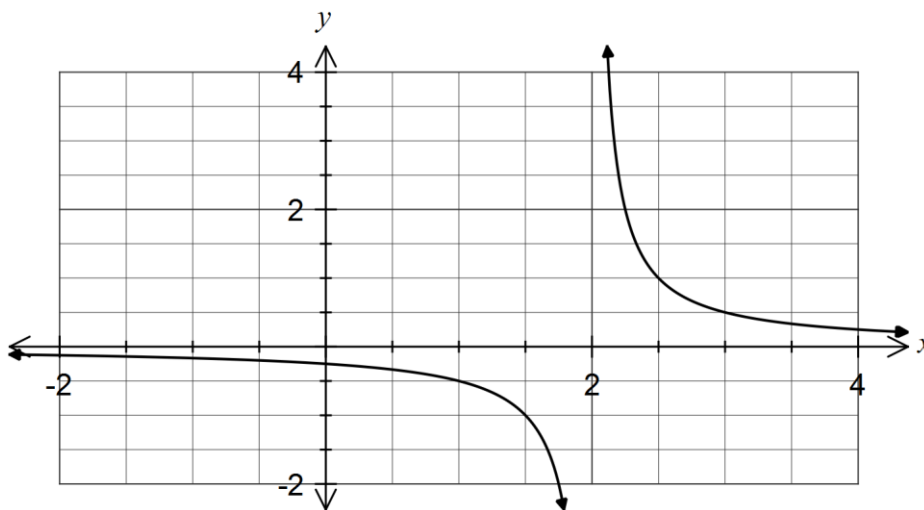
(a) The quantity P is directly proportional to the quantity T , and it is known that when $T = 12$, $P = 60$.

(i) Determine an equation for the relationship between P and T . (2 marks)

(ii) Sketch a graph of the relationship between P and T . (2 marks)



(b) The graph below shows $y = \frac{a}{x-b}$, where a and b are constants.

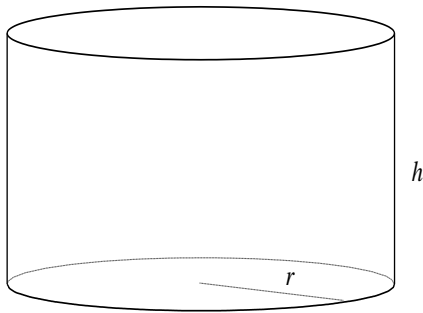


Determine the values of a and b . (2 marks)

Question 20

(10 marks)

- (a) A cylinder is such that the sum of the height and three times the radius is 50 cm.



- (i) Write an equation for the height, h , in terms of the radius, r , for this cylinder. (1 mark)
- (ii) Show that the total surface area of the cylinder is given by $A = 100\pi r - 4\pi r^2$. (2 marks)
- (iii) Using calculus techniques, determine the dimensions of this cylinder to obtain the maximum possible surface area, and state this area. (3 marks)

- (b) The displacement, x m, of a particle from a fixed point O is given by $x = 2t^3 - 3t^2 - 12t + 1$, $t \geq 0$, where t is the time, in seconds.
- (i) Determine the initial velocity of the particle. (2 marks)
- (ii) Determine the displacement of the particle at the instant it is stationary. (2 marks)

Question 21**(6 marks)**

The circumference of a circle of radius 25cm passes through the centre of a circle of radius 15cm. Find the area of intersection of the two circles.

Additional working space

Question number: _____

Additional working space

Question number: _____

Additional working space

Question number: _____

© 2015 WA Exam Papers. Hale School has a non-exclusive licence to copy and communicate this paper for non-commercial, educational use within the school. No other copying, communication or use is permitted without the express written permission of WA Exam Papers.